



November 2015

third floor plan



QEII Centre

Broad Sanctuary, Westminster, London SW1P 3EE

Telephone: +44 (0)20 7222 4000 **e-mail:** info@QEIICentre.London **Website:** www.QEIICentre.London

Fleming | Whittle | Britten

third floor

Fleming Whittle Fleming + Whittle combined Britten Guild

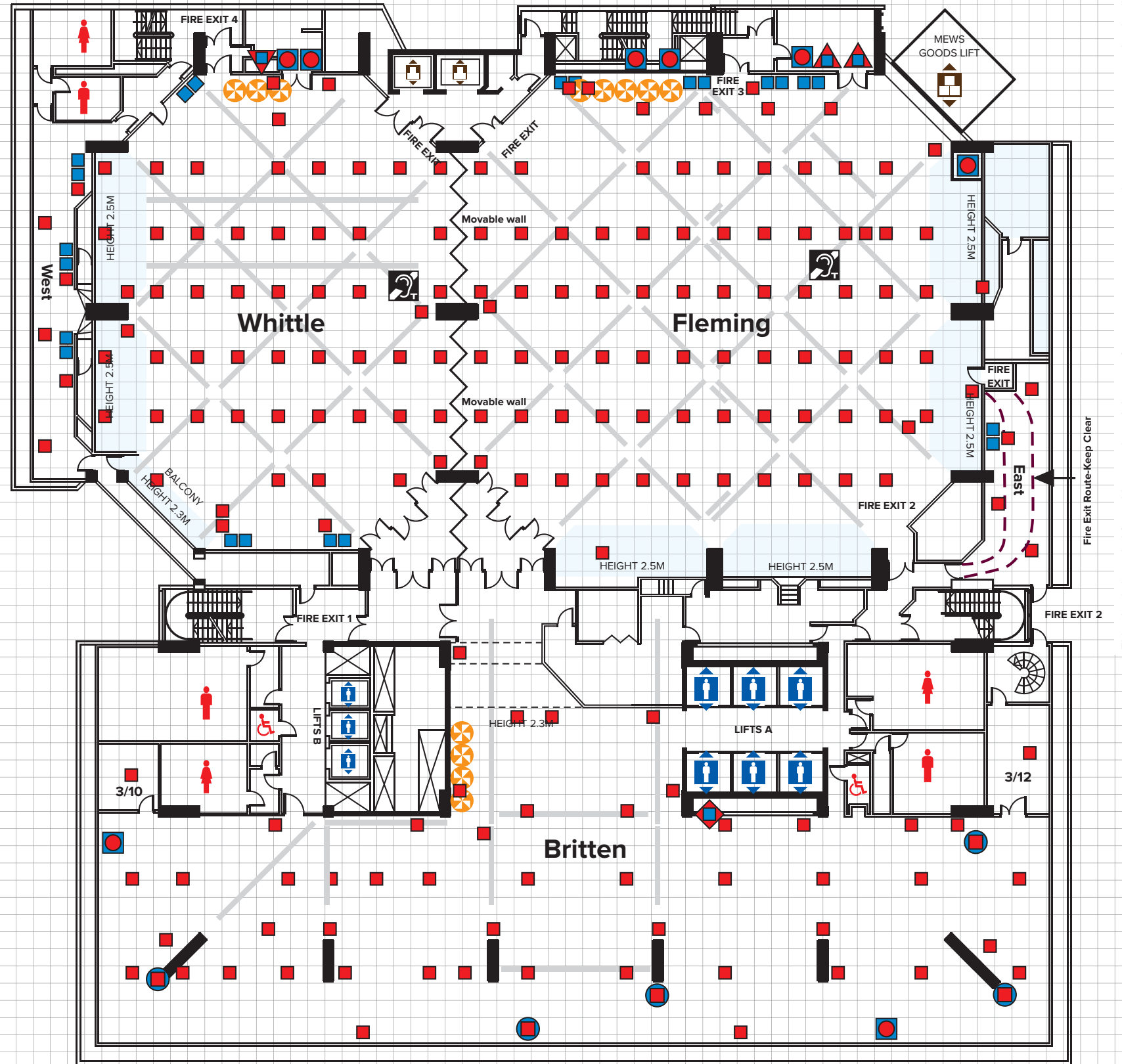
Recommended Capacities

Theatre	780rp	400rp	1300fp/1200rp	–	56
Classroom	348*	206*	600*	–	30
Boardroom	100	80	–	–	30
Banquet	550	340	930	450	40
Fork buffet	–	–	–	750	60
Cabaret†	294rp	161rp	497rp	–	28

rp = Rear projection. †Cabaret capacities are based on 7 people to a table. *Rear projection recommended in Fleming and Whittle Rooms. Please note that these figures are subject to change according to safety requirements, legislation and AV usage.

Dimensions

Height (max)	4.9 m	4.9 m	4.9 m	6.7 m	3.8 m
Height (min)	2.5 m	2.5 m	2.5 m	4.7 m	3.2 m
Length	29.4 m	28.8 m	56.9 m	54.5 m	13.3 m
Width	29.3 m	21.3 m	29.3 m	12.6 m	9.5 m
Area	860 m ²	515 m ²	1,375 m ²	767 m ²	85.4 m ²



This plan is intended for guidance only and does not form any contract, representation or warranty, expressed or implied.

Key

- | | | | |
|------------------------------------|----------------------------------|------------------|---------------|
| 13 amp wall socket | Power 3 phase 63A (fused at 50A) | Lift: Passenger | Lighting Bars |
| Electrical floor sockets | Power 3 phase 32A | Lift: Goods | |
| Power 3 phase 125A | Power single phase 13A | A/V Control Room | |
| Power 3 phase 125A (fused at 100A) | Power single phase 16A | Induction loop | |
| Power 3 phase 125A (fused at 80A) | Sound control | Toilets | |
| Power 3 phase 63A | Fan housing | Pillar | |
- Scale in metres
-

